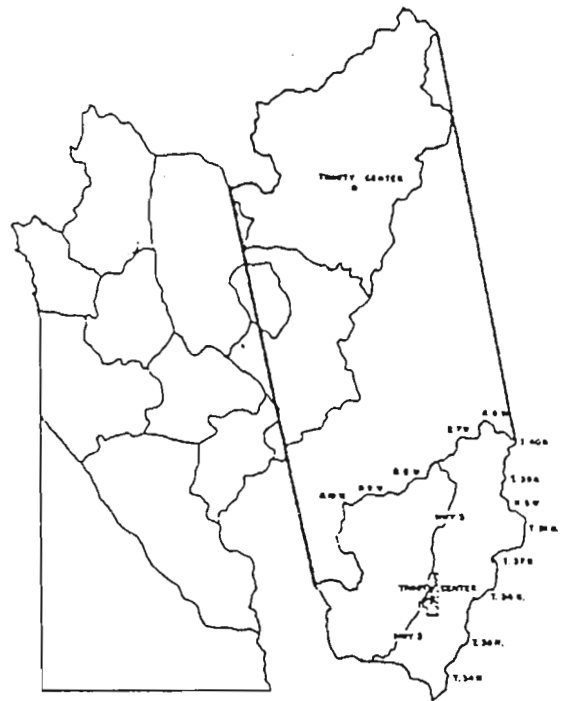


DATA SHEET

Trinity Center Community
Services District
P.O. Box 177
Trinity Center, CA
96091

NORTH LAKE



SPHERE OF INFLUENCE

Recommended that the Trinity Center Community Services District's Sphere of Influence be reduced to less than the present District boundaries. The lands proposed to be excluded from the Sphere of Influence consist of properties currently zoned TPZ or designated Agricultural Forest or under Federal ownership.

THE DISTRICT AREA

Square Miles:	6 miles
Primary Land Use:	Residential, recreational, and timber management
Population:	350 year-round residents and 3,500 seasonal residents

HISTORICAL/POLITICAL

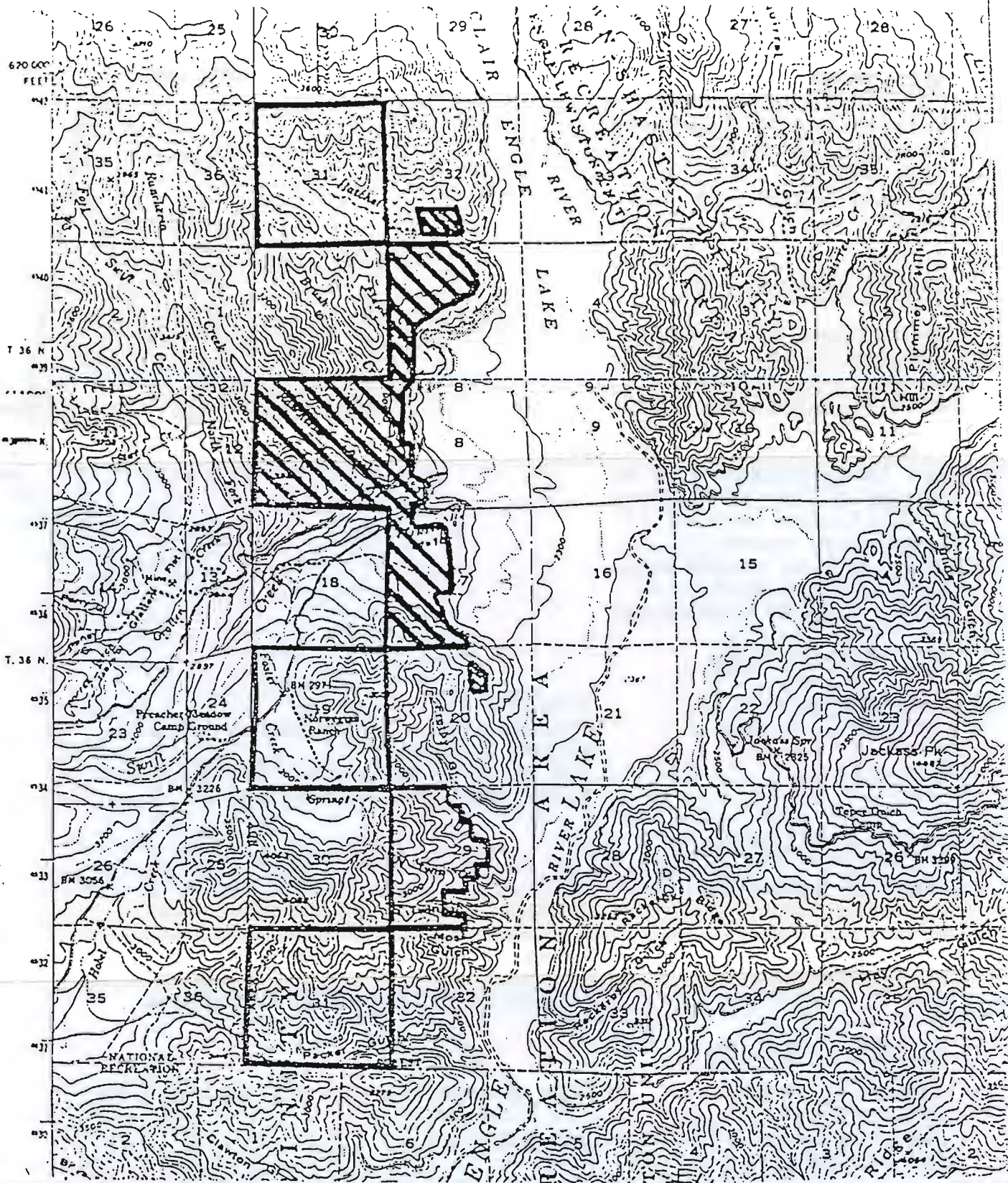
Date of Formation:	1961
Enabling Act:	Community Services District Act
Governing Body:	5 member Board of Directors with 4-year staggered terms
Administration:	One part time clerk and unknown number of volunteer firefighters

DISTRICT SERVICES

Currently Provided:	Fire protection and street lighting
Authorized:	See attached
Latent Powers:	See attached
ISO Rating:	6

FISCAL

1984/85 Total Budget:	\$51,030.00
Primary Revenue Source:	Property taxes and Augumentation Fund
Fiscal Health:	Good



SPHERE OF INFLUENCE

LEGEND



Existing Trinity Center
Community Services District



Proposed Sphere of Influence

- Authorized:
- a) To supply the inhabitants with water for domestic use, irrigation, sanitation, industrial use, fire protection and recreation.
 - b) The collection, treatment or disposal of sewage, waste and storm water of the district and its inhabitants.
 - c) The collection or disposal of garbage or refuse matter.
 - d) Protection against fire.
 - e) Public recreation by means of parks, playgrounds, swimming pools or recreation buildings.
 - f) Street lighting.
 - g) Mosquito abatement.
 - h) The equipment and maintenance of a police department or other police protection to protect and safeguard life and property.

- Latent Powers:
- a) To acquire sites for, construct, and maintain library buildings, and to cooperate with other governmental agencies for library service.
 - b) The opening, widening, extending, straightening, and surfacing, in whole or in part, of any street in such district subject to the consent of the governing body of the county or city in which said improvement is to be made.
 - c) The construction and improvement of bridges, culverts, curbs, gutters, drains, and works incidental to the purposes specified in subdivision (b), subject to the consent of the governing body of the county or city in which said improvement is to be made.

ADDITIONAL INFORMATION

A. District Formation

The Trinity Center Community Services District was established on September 12, 1961. The District was formed to provide the full range of Community Service District services with the exception of those described earlier. The District is governed by a five-member locally elected Board of Directors.

B. Service Area

The Trinity Center Community Services District contains the community of Trinity Center as well as territories north and south of Trinity Center.

Timber management, recreation and residential development consist of the predominate land uses in the area.

The present population in the District consists of approximately 350 permanent residents and 3,500 seasonal residents. The recreational activities available due to the proximity of Trinity Lake and the Trinity Alps Wilderness area provide the primary attractions to the seasonal residents. Aside from the seasonal influx, the District area is not expected to experience any significant population growth in the next ten years.

C. The Surrounding Area

The area surrounding the Trinity Center Community Services District is predominately in recreational or timber management related uses and therefore sparsely populated. The nearest communities are Coffee Creek to the north and Weaverville to the south.

D. Planning

The Trinity Center Community Services District is located in the middle of the North Lake General Plan area. The majority of the General Plan designations of the North Lake Area is Resource, which is consistent with the areas of timber management and recreational uses.

The pertinent General Plan policies emphasize that the recreational and tourism values of Trinity Lake should be protected and that resource production activities should be encouraged to continue.

It is also stated in the General Plan that a moderate level of services should be provided within the community of Trinity Center and that in remote areas services should be kept to a minimum.

Given these policies it would be desirable from a Planning perspective to exclude any resource production or open space areas from either the Sphere of Influence or the existing District.

Of additional interest is a statement within the General Plan that septic tanks should be closely monitored in the Trinity Center community and that alternatives to septic tanks should be explored.

Discussion with the Health Department has indicated that there are some unbuildable lots due to septic problems within the community of Trinity Center. Although this problem appears to be localized, it may be desirable for the Community Services District to explore possible utilization of the latent sanitary powers to resolve this problem.

E. ISO Rating

The Trinity Center Community Services District area has an ISO rating of 6. This rating is used as an indication of the District's ability to defend against a major fire that might occur in the area the District serves. The rating classes are numbered from 1 to 10, the highest number represents the least protection with the highest fire insurance premium rates.

F. Fragmentation and Overlap

The Trinity Center Community Services District is one of seven community services districts serving the County area. The only other special district servicing the same area is the Resource Conservation District. Since the Resource Conservation District is a specialized district and no other districts currently serve the area, there does not appear to be any fragmentation or overlap in the provisions of services to the area by special districts.

It should be noted that the subject Community Services District is located within the proposed Trinity Alps Public Utility District (TAPUD). However, the formation of the TAPUD was conditioned so that TAPUD can only provide electric services to its district area.

DISTRICT SERVICES

A. Fire Prevention and Suppression

The Trinity Center Community Services District operates one fire station which is equipped with two fire engines and appurtenant equipment.

B. Street Lighting

The Trinity Center Community Services District also provides limited street lighting services within the community of Trinity Center.

C. Administration and Staffing

The governing body of Trinity Center Community Services District is made up of five members. These members are elected for four-year staggered terms. The District employs one part-time clerk. In addition to this part time position, the District employs an unknown number of volunteer firefighters.

D. Fiscal Information

1. Budget

The 1984-85 District's total budget is \$51,030.00. This amount includes \$29,090 for equipment and other fixed assets. The average revenue over the last three years was approximately \$19,250.00. The 1984-85 budget includes a carry-over of approximately \$31,000.00 from previous years unspent revenues and interest.

2. Fiscal Health

The District, by its own estimate, is fiscally conservative and working within the confines of its own budget. Based upon its concentration on providing only fire protection and street lighting services the District appears solvent. However, the District lacks the fiscal strength to provide any additional services or to finance major capital expenditures.

OTHER SERVICES

A. Water Supply

Water service within the District area is provided by two mutual water companies to the more densely populated areas and by individual well systems to the balance of the District.

Trinity Center Mutual Water Company is the water provider to Trinity Center. Approximately 170 service connections exist to this system. Trinity Knolls Mutual Water Company provides water service to Winton Park, Northwood Estates, and Trinity Knolls Subdivision. It is estimated that 70 service connections exist to this system.

According to the Health Department, both of these mutuals are in compliance with state requirements and have no foreseeable problem areas.

B. Solid Waste Disposal

Solid waste disposal within the Trinity Center Community Services District is provided by Trinity County Public Works Department by contract with Timberline Disposal Company. The County system is operated by utilizing one central land-fill facility in Weaverville and ten transfer stations in outlying areas. One of these transfer stations is located south of the District area at Hobel.

C. Police Protection

The Trinity County Sheriff's Department has responsibility for police protection within Trinity Center Community Services District. The California Highway Patrol assumes traffic control for State Highway 3 which transverses through the District.

D. Resource Conservation

The Trinity Center Community Services District lies within the Trinity County Resource Conservation District, which provides assistance in soil conservation planning, erosion and drainage control. The Resource Conservation District does not have an adopted Sphere of Influence.

E. Electric Service

Pacific Gas and Electric supplies electrical power to the Trinity Center Community Services District area. The existing PG&E facilities appear adequate to meet the needs of the area at this time. However, the Trinity Center Community Services District lies within the proposed Trinity Alps Public Utility District. Should this district be approved by the voters, it is expected that electric service would change from PG&E to Trinity Alps Public Utility District within the next few years.

F. Sewer

The entire District area is serviced by individual septic systems. See comments under Planning for specific comments.

SPHERE OF INFLUENCE FACTORS

The Government Code requires that several factors be considered in determining an agency's Sphere of Influence. In the following sections, each factor is stated and pertinent information is presented and analyzed.

1. The maximum possible service area of the agency based upon present and possible service capabilities of the agency.
 - a) Discussion

The District cannot currently provide the authorized range of services to the District area. It is not expected the ability to provide services to the existing district area or outlying areas will improve within the next ten years.
 - b) Analysis

Since the District cannot meet its existing service obligations to its existing District area it would be advisable to constrict the Sphere of Influence to a more serviceable area.
2. The range of services the agency is providing or could provide.
 - a) Discussion

The Trinity Center Community Services District currently provides fire protection and street lighting services to the District area. However, the District is authorized to provide many more services.
 - b) Analysis

The District should explore utilization of more of its authorized services. In particular, the District could become more involved in the development of public recreation sites and the collection, treatment or disposal of sewage wastes.
3. The projected future population growth of the area.
 - a) Discussion

The existing population within the Trinity Center Community Services District is estimated at 350 year-round residents. The total number of seasonal residents is expected to remain fairly constant over the next ten years because no major resorts or tourist type developments are currently under development. The number of year-round residents should continue to grow at a moderate pace.

b) Analysis

It is expected that population growth will not create an unreasonable demand on district services.

4. The type of development occurring or planned for the area, including, but not limited to, residential, commercial, and industrial development.

a) Discussion

The anticipated type of development within the Trinity Center Community Services District consists of primarily low density residential. Timber harvesting should continue to occur as timber management dictates.

b) Analysis

No major types of development are expected to occur which could create an extra demand on the District.

5. The present and probable future service needs of the area.

a) Discussion

The District is currently providing needed fire protection and street lighting services to the District area. However, in Trinity Center there currently exists the need for an organization to complete the tennis court recreational development. In addition, there appears to be a limited need for a community septic maintenance authority. The need for such an entity should increase as existing septic systems age.

b) Analysis

The Trinity Community Services District is currently authorized to provide for public recreation and for the collection, treatment, or disposal of sewage wastes. The District should explore delivery of these services as well as other services as required by District residents.

6. Local governmental agencies presently providing services to such area and the present level, range and adequacy of services provided by such existing local governmental agencies.

a) Discussion

The local agencies presently providing services to the District area and the services they provide are discussed in the Services Section of this report. In general, the typical range of community services beyond those authorized for this District are being adequately provided for.

b) Analysis

Although there may be a need for additional services in the District area, it is within the authority of the District to provide such services.

7. The existence of social and economic interdependence and interaction between the area within the boundaries of a local governmental agency and the areas which surround it and which could be considered within the agency's sphere of influence.

a) Discussion

The nearest communities are Coffee Creek to the north and Covington Mill to the south. Most of the commercial and service related needs of the District area are met by the Community of Weaverville which is the County seat.

b) Analysis

The Trinity Center Community is an isolated District with little interaction with the immediate unpopulated areas.

The proposed Sphere of Influence excludes unserviceable areas outside of as well as within the existing District area.

8. The existence of agricultural preserves in the area which could be considered within an agency's sphere of influence and the effect on maintaining the physical and economic integrity of such preserves in the event that such preserves are within a sphere of influence of a local governmental agency.

a) Discussion

Currently, the existing Trinity Center Community Services District includes approximately 4 1/2 sections of Timber Production Zone properties and 4 sections of U.S. Forest Service lands. These TPZ and Forest Service properties account for approximately two-thirds of the total district area.

b) Analysis

The inclusion of these TPZ and Forest Service properties within the existing district area is contrary to the LAFCo intent of preventing development within Agricultural Preserves. The recommended Sphere of Influence excludes these areas even though they are within the existing District boundaries.

SUMMARY OF FINDINGS

The Government Code requires that a written statement of finding be made regarding each of the previously considered factors. The following section summarizes these findings:

1. The maximum possible service area of the Trinity Center Community Services District is actually less than the existing District boundaries. Therefore, the Sphere of Influence should be constricted to a reasonable service area.
2. The Trinity Center Community Services District provides fire protection and street lighting services. The District could provide many more services as previously discussed.
3. The Trinity Center Community Services District will experience moderate population growth.
4. The District area contains primarily residential development and resource production activities.
5. The District is currently able to provide limited services to District residents. It is probable that current and future services will be needed in the area of recreational services and sewage disposal.
6. A number of governmental agencies provide generally adequate levels of service beyond those service responsibilities of the Trinity Center Community Services District.
7. The Trinity Center Community Services District is fairly isolated except for reliance on the Community of Weaverville for certain services.
8. The existing District area contains a substantial amount of properties which are zoned Timber Production or managed by the U.S. Forest Service. However, the proposed Sphere of Influence only includes the District area exclusive of these lands.

RECOMMENDATION

SPHERE OF INFLUENCE:

It is recommended that the Sphere of Influence of the Trinity Center Community Services District include only areas located within the existing District area exclusive of U.S. Forest Service lands and TPZ properties. Furthermore, it is recommended that the District explore the possibility of increasing its service responsibilities.